

Michigan Department of Education

# Section 31a

## Supplemental Funding

May 2025

welcome



Overview: Intent & Purpose, Assurances



Eligibility



Program Planning



Reporting

# Section 31a Agenda

# Section 31a

Categorical Grant: in State School Aid Act

Annually renewed/reviewed

Supplemental At-risk funding

Legislation defines:

- Intent & Purpose
- Assurances
- Allowable uses
- Eligibility
- Reporting and monitoring

# Agenda

---

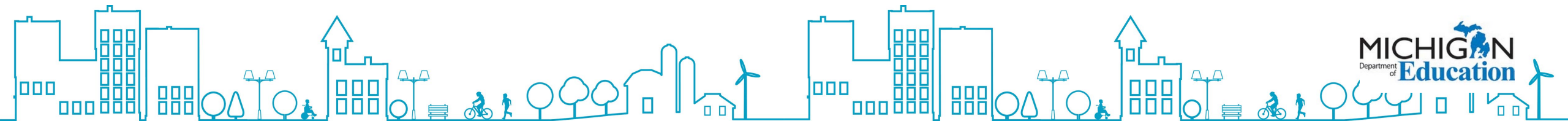
**Intent, Purpose,  
Assurances**

**Allowable Use of  
Funds**

**Eligibility**

**Opportunity  
Index**

**Attendance**



# Intent & Purpose

---

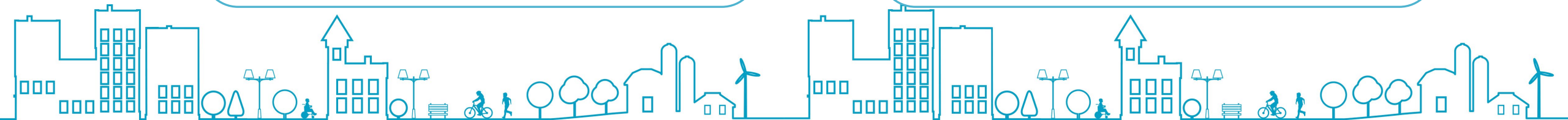
Proficient in:

ELA – end of 3<sup>rd</sup> grade

Math – end of 9<sup>th</sup> grade

College/Career Ready

Regular in Attendance



# Allowable Uses

---

Instructional programs

Direct non-instructional services  
Mental Health, Counseling

Professional learning

Implement a coaching model



# Assurances

---

Implement  
MTSS for all  
grades

Comply with K-  
12 Literacy &  
Dyslexia Leg

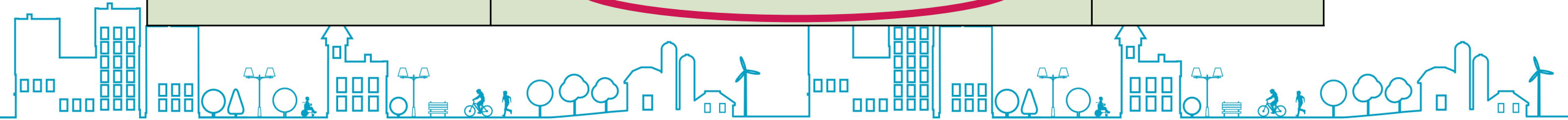
Use Resources:  
Early Literacy &  
Numeracy

Supplement  
School  
Breakfast

Submit Annual  
Report

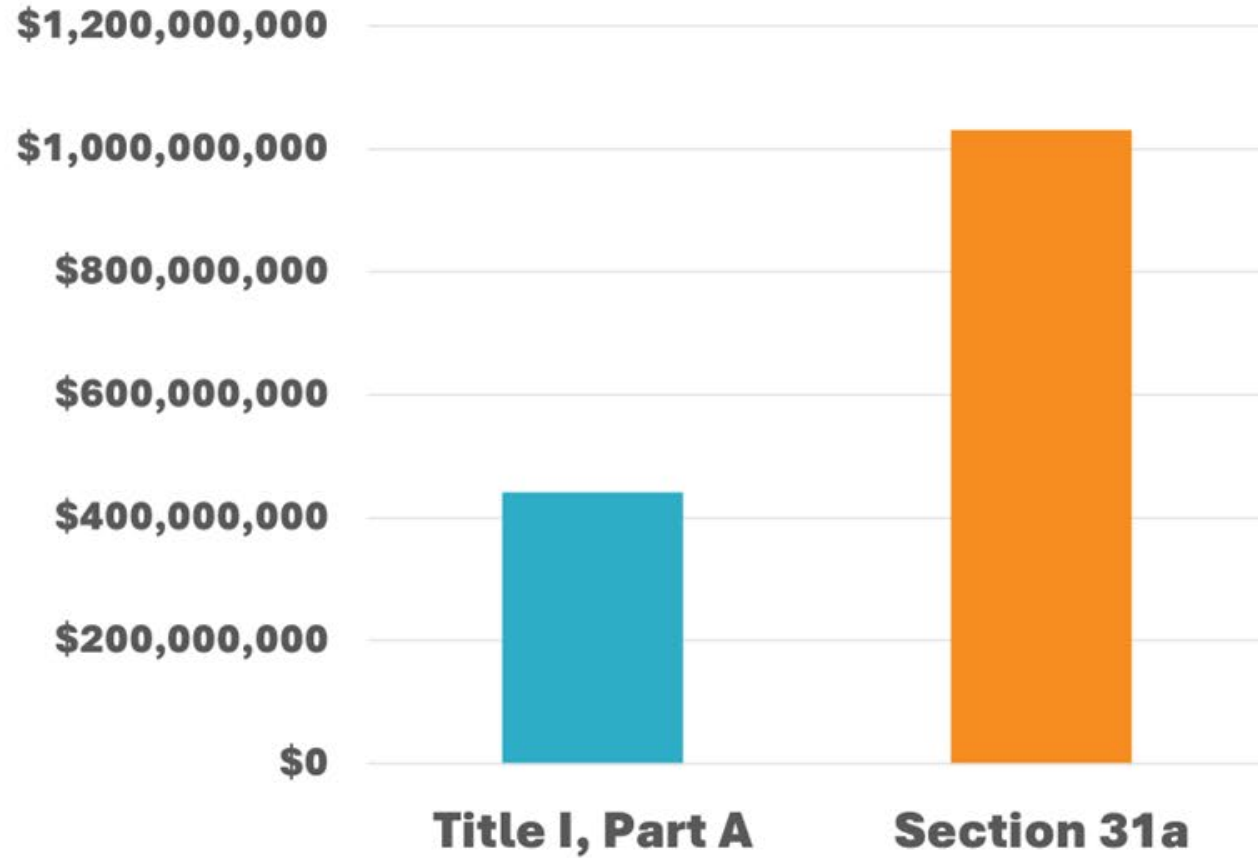
# Section 31a At-risk Programming Statewide Allocation Increases

Fiscal Year (School Year)	At-risk Programming Statewide Allocation	Percent Increase
<b>FY17</b>	\$378,988,200	--
<b>FY18</b>	\$499,000,000	+32.0%
<b>FY19</b>	\$499,000,000	0.0
<b>FY20</b>	\$510,000,000	+2.2%
<b>FY21</b>	\$510,000,000	0.0
<b>FY22</b>	\$512,500,000	+0.5%
<b>FY23</b>	\$747,500,000	+46.0%
<b>FY24</b>	\$952,000,000	+27.0%
<b>FY25</b>	\$1,034,924,000	+8.7%



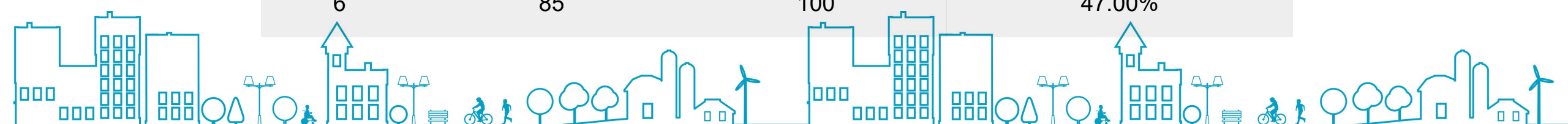
# Michigan 2024-25 At-Risk Funding

## Title I, Part A Section 31a



# Section 31a(4) Opportunity Index Score Bands

BAND	% ED MINIMUM	% ED MAXIMUM	OI WEIGHT (MULTIPLIER)
1	0	19.99	35.00%
2	20	43.99	36.00%
3	44	58.99	37.50%
4	59	72.99	39.00%
5	73	84.99	42.00%
6	85	100	47.00%



# At-risk Eligibility

*Economically disadvantaged \**

*English learner\**

Chronically absent

Victim of child abuse or neglect

Pregnant teenager or teenage parent

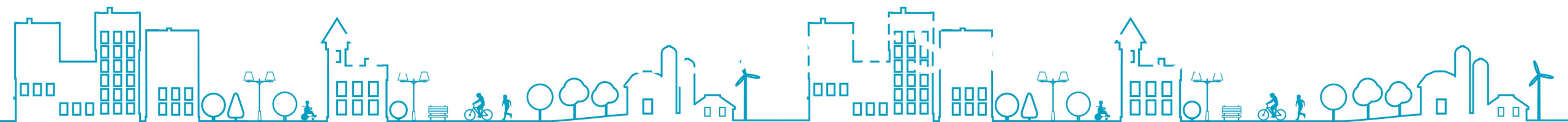
Family history of school failure, incarceration, or substance abuse

*Immigrant who has immigrated within the immediately preceding 3 years\**

Did not complete HS in 4 years and is still continuing in school

Did not achieve proficiency on State summative assessments

At risk of not meeting the LEA's local objectives in ELA or math as demonstrated on local assessments



# Instructional Services

Content area intervention

Interventions by support staff

Coaches – Academic, Behavior, MTSS

Supplemental instructional material

After-school programs/intervention

Supplemental Support for Credit recovery

## Direct Non-Instructional Services

School-Parent Liaison/School Security

Climate & Culture Initiatives

SEL Initiatives & Support

Medical services

Mental health services

Attendance Initiatives

# Other Allowable Use of Funds Provisions

---

Schoolwide Reform

Professional  
Development to  
Implement  
Coaching Model

Support Staff

Pre-Kindergarten

Anti-Bullying &  
Crisis Intervention  
Programs

# Important Considerations

---

Schoolwide  
Reform

MTSS at all  
grade levels

Program  
Planning

# Reporting

---

**Eligibility**

**APFR**

# At-risk Eligibility

Economically disadvantaged\*

English learner\*

Chronically absent

Victim of child abuse or neglect

Pregnant teenager or teenage parent

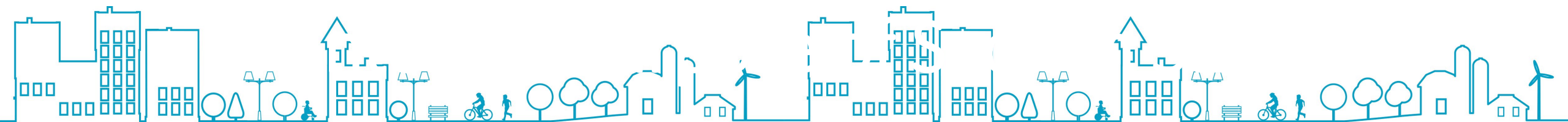
Family history of school failure, incarceration, or substance abuse

Immigrant who has immigrated within the immediately preceding 3 years\*

Did not complete HS in 4 years and is still continuing in school

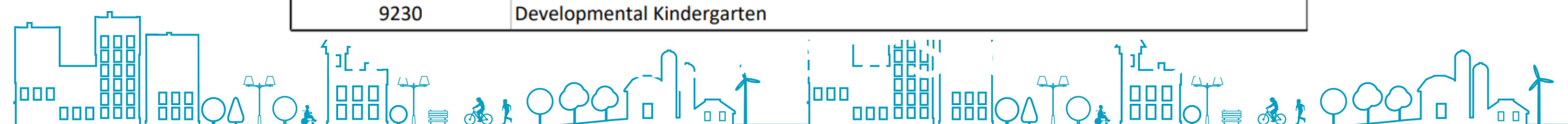
Did not achieve proficiency on State summative assessments

At risk of not meeting the LEA's local objectives in ELA or math as demonstrated on local assessments



# Program Participation

Program Eligibility Participation	
Code	Description
3060	Section 31a At Risk
3500	Early/Middle College Participant
6010	Title I Targeted Assistance Program
9110	Out-of-State Resident
9120	International Student
9130	Immigrant
9140	Military Connected Student
9210	Section 504
9220	Alternative Education
9222	Sec. 6(4)(I)(ii) Pupil Count Exception
9229	Seat-Time Waiver Participant
9230	Developmental Kindergarten



# ED Report

---

Direct  
Certification

Categorical

Supplemental  
Nutrition  
Eligibility

# ED Report vs. At-risk Eligible

---

**ED**

**10 Criteria**

Pupil ID  
Worksheet

MSDS  
Program  
Participation

Program  
Planning

# Eligibility Documentation



# Reporting Student Eligibility

---

Meet ONE  
eligibility criterion

Qualify in ONE  
collection  
(continue to be  
reported – SY)

Eligible for  
remainder of  
school year

Consistent Criteria

Maintain  
documentation

# Written Procedures



# APFR Preparation

---

BOY Planning

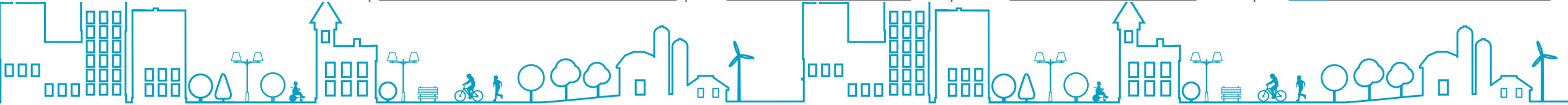
Expenditures - MTSS

Program Input - MTSS

# APFR – Gathering Data

## Section 2. Part A. Direct Instructional Supports: During the Day, After & Extended School Year [ (5)(11)(13) ]

DIRECT INSTRUCTIONAL SUPPORTS	a. ACTUAL GRADES SERVED	b. TOTAL NUMBER OF AT-RISK PUPILS SERVED	c. NUMBER SERVED WHO WERE ELIGIBLE FOR FREE OR REDUCED-PRICE MEALS (ED-Economically Disadvantaged)	d. AMOUNT OF SECTION 31a FUNDS SPENT (Not General Funds)
MTSS Coach/Coordinator				\$
Supplemental Content Area Teaching Staff				\$
Instructional Materials	K-12	3139	1883	\$ 9,985.50
Paraprofessional Staff-Behavioral	K-8	782	649	\$ 116,379.90
Paraprofessional Staff-Academic	K-8	698	419	\$ 372,247.80



# APFR Narrative Questions

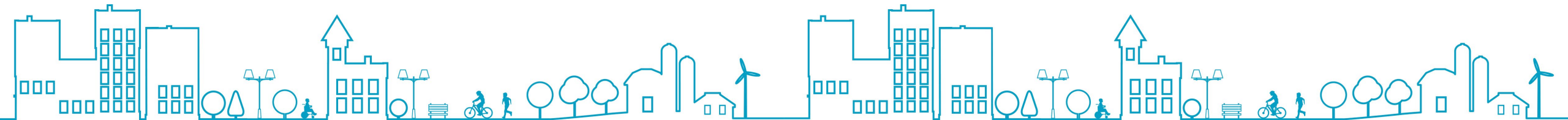
## MiMTSS Response

During the 2023-24 school year, list who provided the LEA with professional learning and/or technical assistance to support K-12 MTSS implementation (e.g. MiMTSS TA Center, ISD, vendor)

6 of 500

During 2023-24 list the fidelity tool(s) utilized by the LEA to measure MTSS implementation, indicating grade levels for each tool. (e.g. Reading Tiered Fidelity Inventory for K-5, PBIS Tiered Fidelity Inventory 6-8)

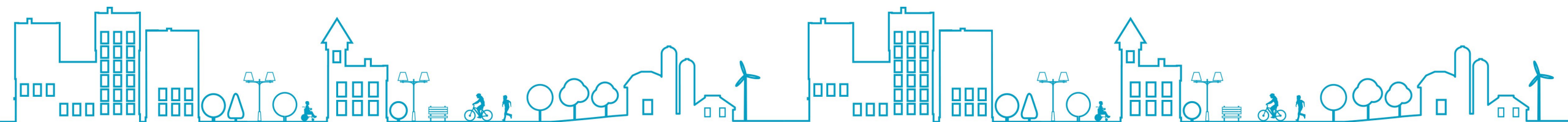
8 of 500



# Additional Support

Of the 5 components for MTSS, which of these components does the district need further guidance and resources? (Check all that apply)

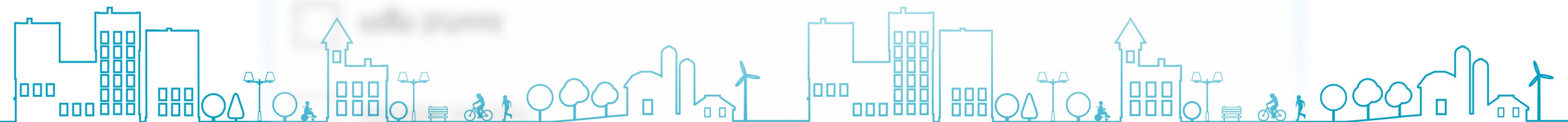
- Tiered Delivery System
- Team-Based Leadership
- Continuous Data-Based Decision Making
- Comprehensive Screening & Assessment System
- Selection and Implementation of Instruction, Intervention, and Supports



# Guidance & Resources

At which level would the district need further guidance and resources?

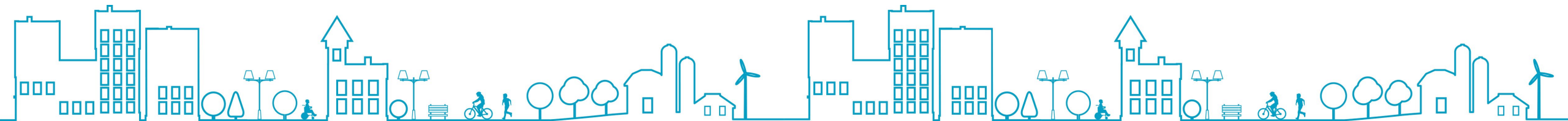
- Elementary
- Middle School
- High School



# EWIMS

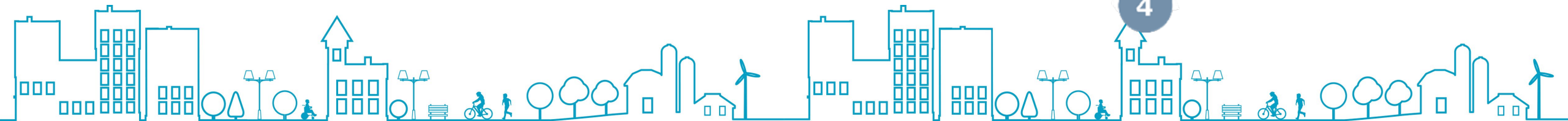
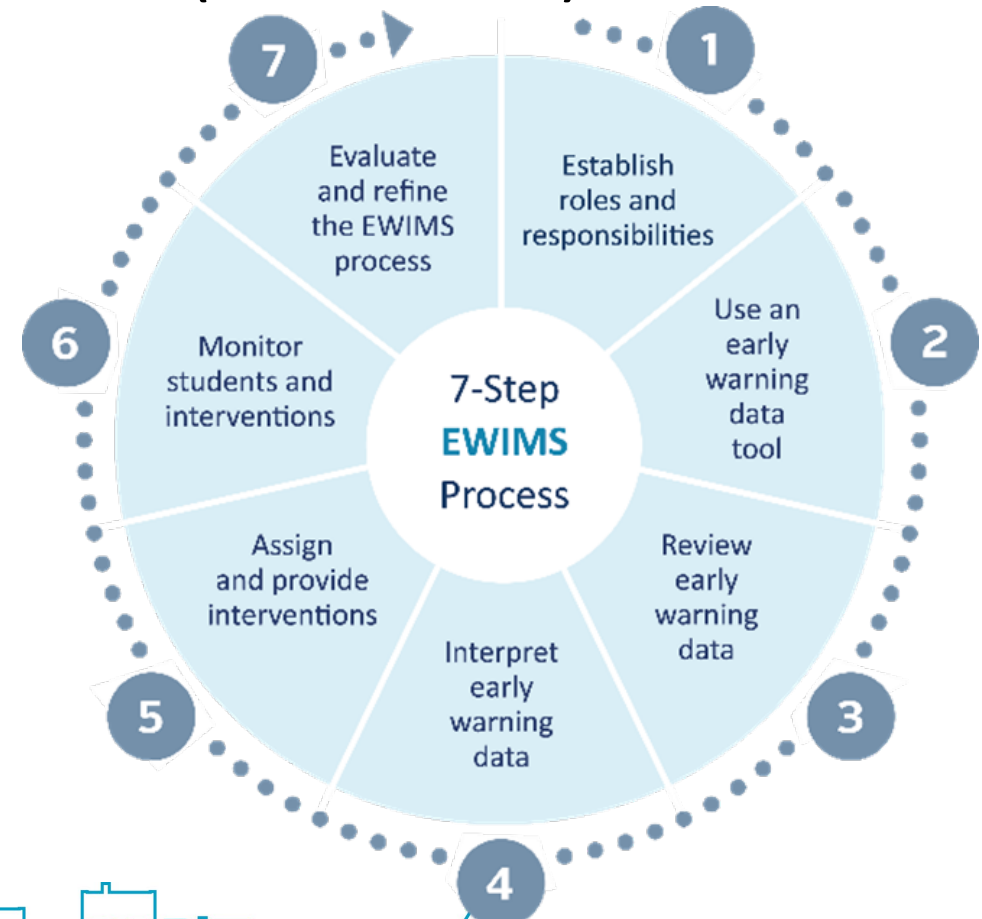
Is your district currently implementing the Early Warning Intervention and Monitoring System (EWIMS) to enact MTSS for secondary? (choose one answer)

- Yes, the district is fully implementing EWIMS.
- Yes, the district is implementing training and adoption of EWIMS this year.
- No, the district is not using EWIMS.
- Not applicable, the district does not have a middle school or high school.

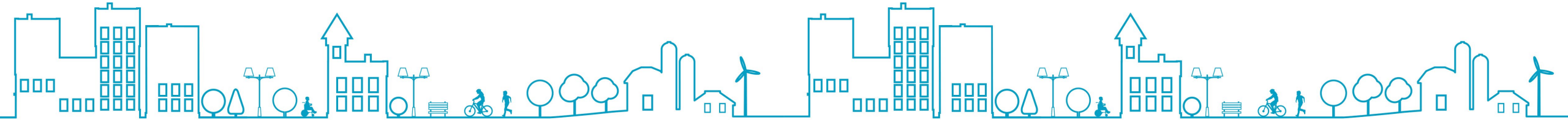
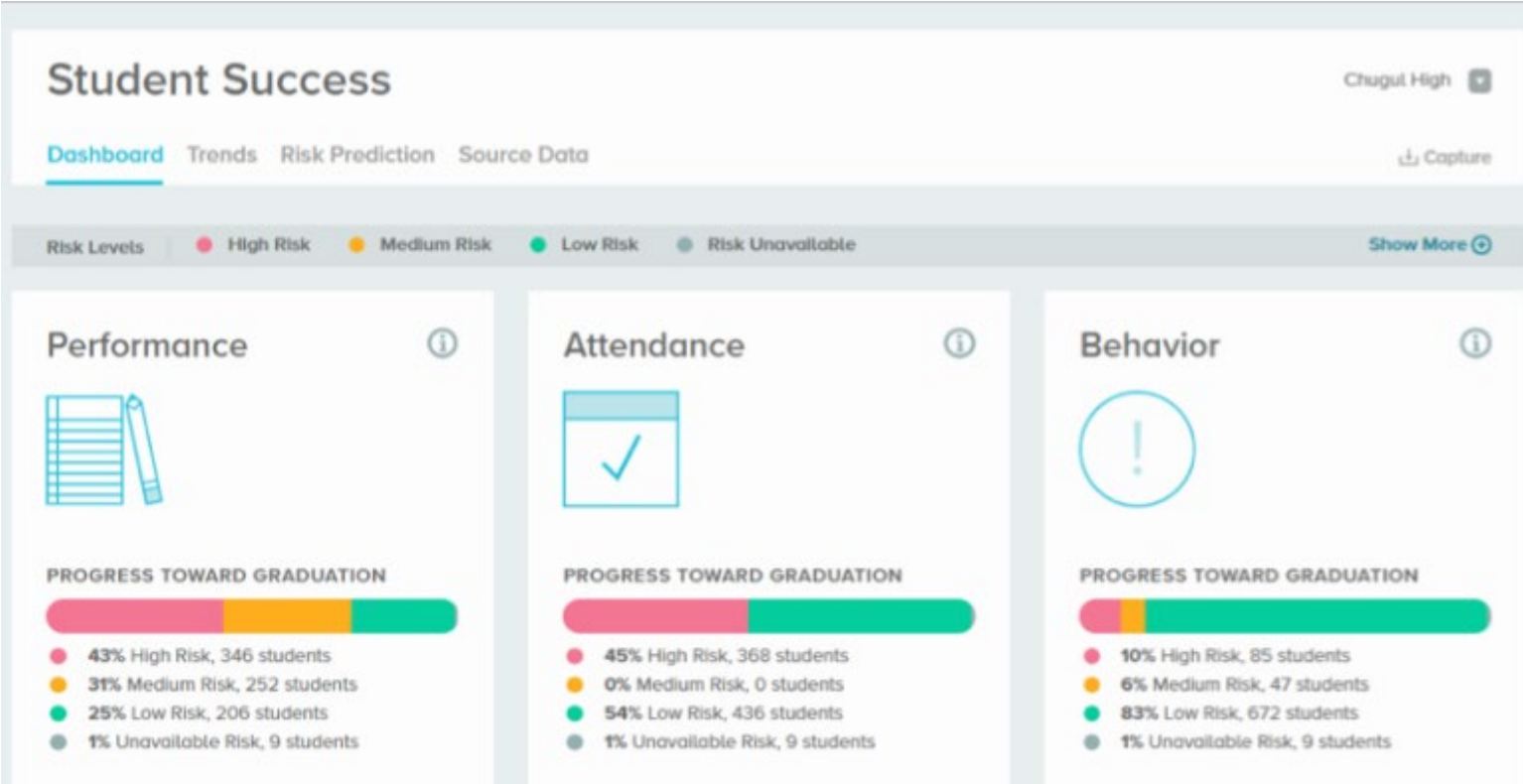


# Early Warning Intervention and Monitoring System (EWIMS)

- ❑ 7 Steps
- ❑ Data-driven decisions
- ❑ Identify students
- ❑ Determine interventions
- ❑ Monitor progress



# EWIMS Data Tool





# Intentional Planning

---

Instructional programs

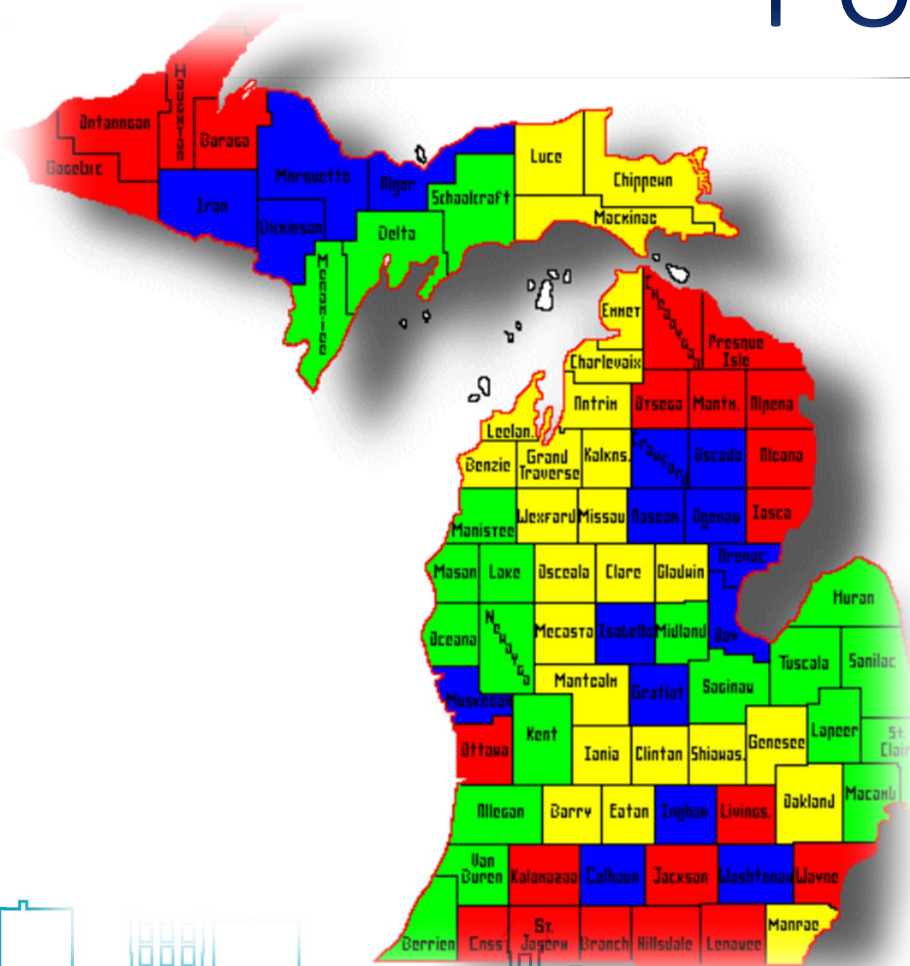
Direct non-instructional services  
Mental Health, Counseling

Professional learning

Implement a coaching model

# Regionalization of Services

## Point of Contact



**Dawn Carmody**

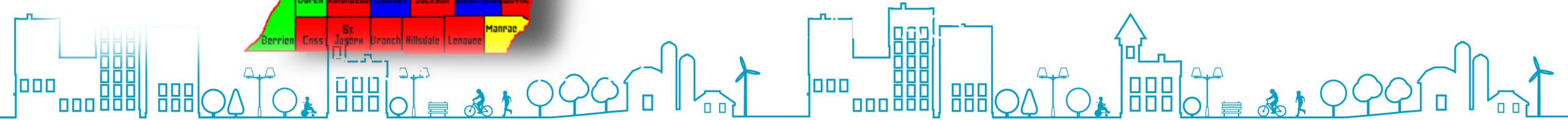


**Suzanne Grambush**



**Stephanie Holmes-Webster**

**Joan Jackson**



# Section 31a Team Contact Information

## Office of Educational Supports

Section 31a General Mailbox, [MDE-Section31a@michigan.gov](mailto:MDE-Section31a@michigan.gov)

(517) 241.6970

Manager, Special Populations Unit, Michelle Williams, [williamsM48@michigan.gov](mailto:williamsM48@michigan.gov)

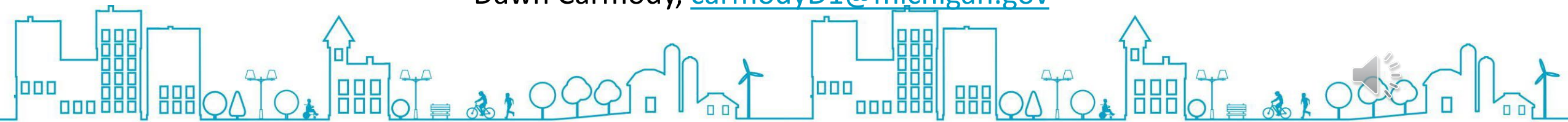
## Section 31a, MTSS, and Early Literacy Consultants

Suzanne Grambush, [grambushS1@michigan.gov](mailto:grambushS1@michigan.gov)

Stephanie Holmes-Webster, [holmeswebsterS@michigan.gov](mailto:holmeswebsterS@michigan.gov)

Joan Jackson, [jacksonj67@michigan.gov](mailto:jacksonj67@michigan.gov)

Dawn Carmody, [carmodyD1@michigan.gov](mailto:carmodyD1@michigan.gov)



# Questions

