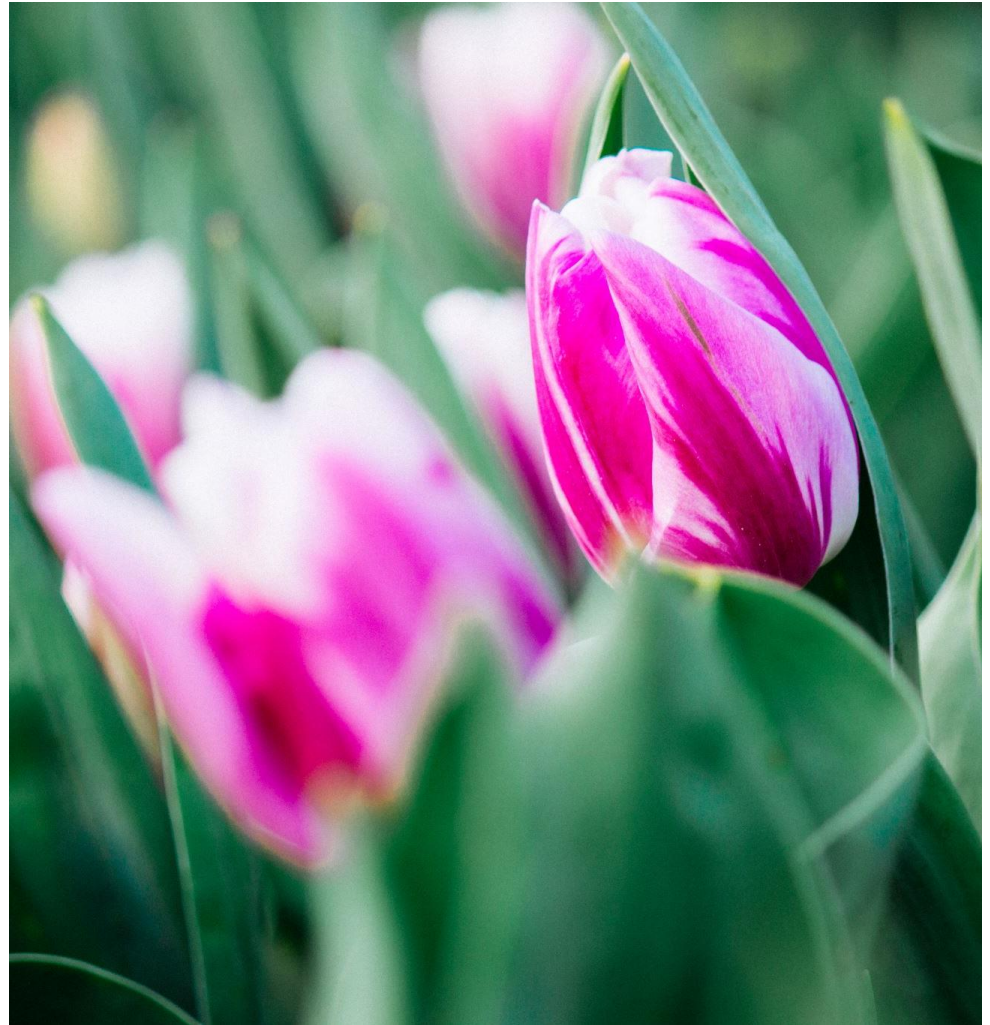


***Early On* and
Michigan
Mandatory
Special Education
(MMSE)**

Michigan Pupil
Accounting and
Attendance
Association (MPAAA)
May 6, 2024



Welcome!

- MiLEAP Staff
- CEPI Staff
- MDE Contractor
- Who is in the Room?

Today's Topics

- What is *Early On*?
- MSDS Collection of Data
- Reporting Scenarios
- Data Validation

What is *Early On*?

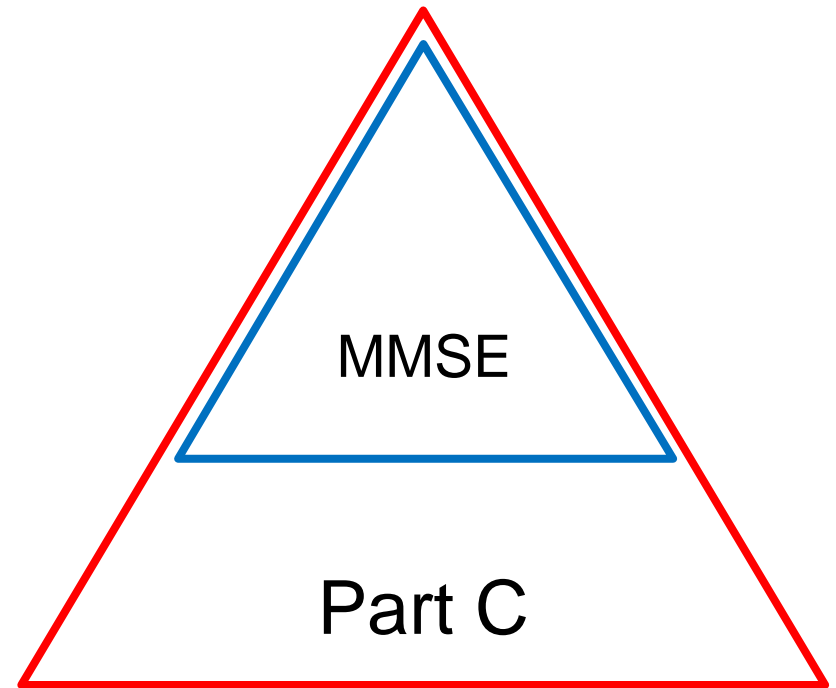


Early On

- Part C of IDEA
- Early Intervention Services for Children Birth to Three and Their Families
- Individualized Family Service Plan (IFSP)
- Participation is Voluntary

Early On - Eligibility

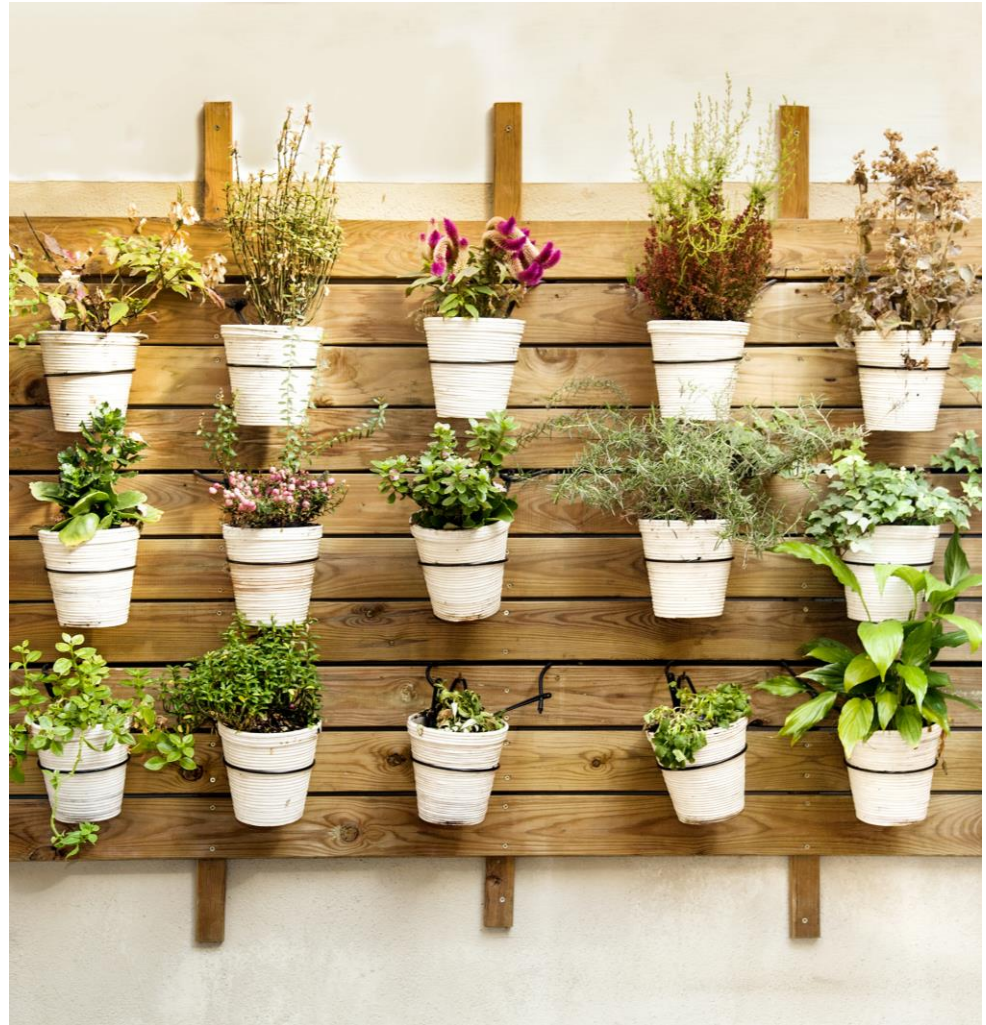
- Evaluation
 - Multidisciplinary
 - Five Developmental Domains
- *Early On* Only
 - Developmental Delay of 20% or more in one domain
 - Established Condition
- *Early On* with MMSE
 - Michigan Administrative Rules for Special Education (MARSE)



Early On – Infrastructure

- Structure
 - ISDs as local lead agencies and subrecipients of federal funds
- Funding
 - Federal Funding
 - Part C Grant
 - Medicaid Reimbursement
 - State Funding
 - Special Education Costs and FTE
 - State School Aid Act Section 54d
- Reported in MSDS General Collection

Michigan Student Data System (MSDS)



MSDS Components to Be Reported – General Information

- School Demographics
- Personal Demographics
- Contacts
- Enrollment
- Membership

MSDS Components to Be Reported – *Early On* Specific

- Initial IFSP
- *Early On*
- Part C Assessment (Ratings)
- *Early On* Services
- Special Education
- Part B Referral

New Child to *Early On*



Required Processes

- Referral
- Evaluation
 - Determines Eligibility
- Assessment – Child & Family
 - Informs Development of the IFSP
- Development of Initial IFSP if Eligible

All of These Steps Must be Completed Within 45
Calendar Days of Referral

Eligibility Determination Not Completed – Process

- When Might This Happen:
 - Unable to Contact Family
 - Parent Does Not Provide Consent for Evaluation
- Prior Written Notice
 - Not Conducting Evaluation and Why
 - Procedural Safeguards
- An IFSP is Not Developed
- No Reporting in MSDS

Determined Ineligible – Process

- Prior Written Notice
 - Ineligible and Why
 - Procedural Safeguards
- An IFSP is Not Developed

Result of Initial IFSP Characteristic Summary

- Reported for all children with eligibility determined (eligible or not eligible)

Code	Description
01	Eligible for both Part C and Special Ed
02	Eligible for Both Part C and Special Ed – Special Ed services declined
03	Eligible for Part C Only
04	Eligible for Both Part C and Special Ed – Part C services declined
05	Eligible for Part C Only - Part C services declined
06	Eligible for both Part C and Special Ed – both Part C services and Special Ed services declined.
07	Not eligible for services

Determined Ineligible – Reporting in MSDS

- Initial IFSP Component
 - Result of Initial IFSP Characteristic
 - Code 07 – Not eligible for services
- *Early On Services Component*

Initial IFSP

*Referral Date: 01/28/2023

Referral Agency: FAM-Family member/Parent

*IFSP Timeliness: 01-Timely

*Result of Initial IFSP: Please Select

*Initial IFSP Date: Please Select

Errors:

Warnings:

- 04-Eligible for Special Ed - declined Part C
- 05-Eligible for Part C Only - Part C services declined.
- 06-Eligible for both Part C and Special Ed - both Part C services and Special Ed services declined.
- 07-Not eligible for services

Navigation tabs: School Demographics, Early On, Initial IFSP, Personal Demographics, Part C Assessment, Early On Services, Contacts, Enrollment, Membership, General Ed FTE

818-Service coordination: 0

Determined Eligible

- Eligible for Part C Only
 - Consented to Services
 - Part C Services Declined
- Eligible For Both Part C and Special Ed
 - Consented to Both
 - Special Ed Services Declined
 - Part C Services Declined
 - Both Part C Services and Special Ed Services Declined.

Determined Eligible, Declined Services - Process

- Prior Written Notice
 - Eligible, Services Provided AND Services Considered and Not Provided & Why
 - Procedural Safeguards
- Parent May Decline Services at any Point
 - After Eligibility Determination, Before Developing IFSP
 - After Developing IFSP, Before Providing Consent for Services

Determined Eligible, Declined Services - Reporting

Initial IFSP

*Referral Date: 01/28/2023

Referral Agency: FAM-Family member/Parent

*IFSP Timeliness: 01-Timely

*Result of Initial IFSP: Please Select

*Initial IFSP Date: Please Select

Errors:

Warnings:

- 04-Eligible for Special Ed - declined Part C
- 05-Eligible for Part C Only - Part C services declined.
- 06-Eligible for both Part C and Special Ed - both Part C services and Special Ed services declined.
- 07-Not eligible for services

School Demographics

Early On

Initial IFSP

Personal Demographics

Part C Assessment

Early On Services

Contacts

Enrollment

Membership

General Ed FTE

818-Service coordination

0

- Report the Referral Date and Referral Agency
- Report the Result of Initial IFSP Using Codes 02, 04, 05, or 06
- *Early On* Component is Not Reported
- *Early On* Services Component is Reported Using Code 818

Found Eligible – Consented to Services - Process

- Develop IFSP
- Prior Written Notice
 - Eligible, Services Provided AND Services Considered and Not Provided & Why
 - Procedural Safeguards
- Obtain Consent for Services
- Initiate All Services Within 30 Calendar Days of Consent

Found Eligible for Part C and MMSE - Consented to Services - Reporting

SpecialEducation | EarlyOn | Initial IFSP | Part C Assessment

Primary Disability: 11-Early Childhood Developmental Delay

Secondary Disability: 22-Legally Blind
 24-Deaf

Plan Date: 02/27/2024

Type of Plan: 01-IFSP

Additional Plan Date:

Support Services: 240-T.C. Hearing Impaired
 250-T.C. Visually Impaired
 261-T.C. Physical Impairment
 262-T.C. Other Health Impairment
 280-Homebound/Hospitalized

Program Service Code: 192-Programs for Severe Language Impairment
 193-Programs for Autism Spectrum Disorder
 194-Elementary or Secondary-Level Resource Program
 270-Early Childhood Special Education Services

Primary Educational Setting: 31-Home

Placed By Another Dist IEP: Select Yes/No

Spec Ed Exit Reason: Please Select

Spec Ed Exit Date:

Section 52 FTE: 0.00

Section 53 FTE: 0.00

Found Eligible – Part C - Consented to Services - Reporting

Student Record Maintenance | School Demographics | Personal Demographics | Contacts | Enrollment | Membership | Initial IFSP

Referral Date: 02/27/2014
Referral Agency: Phy-Physical
Initial IFSP Date: 01-Timely
Initial IFSP Data: Please Select
Errors: warnings

01-Eligible for both Part C and Special Ed
02-Eligible for Part C and Special Ed - Special Ed services refused
03-Eligible for Part C only

School Demographics | Personal Demographics | Contacts | Enrollment | Membership | GeneralEdFTE | EarlyOn | Initial IFSP | Part C Assessment

EarlyOnServices

Service Coordination Agency: ED Education
Primary Service Setting: 33-home
Current IFSP Date: 9/28/2025
TimelyStartOfService: 4 Also New Services

EligibilityReason
Part C Exit Reason
Part C Exit Date
TransitionIFSP
TransitionConfer

01-Delay: Cognitive
02-Adaptive
03-Location

School Demographics | EarlyOn | Initial IFSP | Personal Demographics | Part C Assessment | EarlyOnServices | Contacts | Enrollment | Membership | GeneralEdFTE

Service Code
LengthInMinutes
FrequencyOfService

818-Service coordination
0
0

Part C Childhood Outcomes
(Part C Assessment component)

School Demographics | Personal Demographics | Contacts | Enrollment | Membership | GeneralEdFTE | EarlyOn | Initial IFSP | Part C Assessment | EarlyOnServices

Assessment Date: 9/28/2025
Assessment Type: 01-Initial
Social Relationships: 5-Formal
New Social Relationships: 5-Formal
Knowledge Skills: 5-Formal
Main Knowledge Skills: 5-Formal
Activities: 5-Formal
New Activities: 5-Formal

Found Eligible – Consented to Services - Reporting

- Initial IFSP Component
- *Early On* Component
- *Early On* Services Component
- Part C Assessment (Rating) Component
- Special Education Component (If Eligible for MMSE)

**Ongoing
Reporting –
Active in
*Early On***



Processes

- Delivery of Services
- Child Outcomes Annual Ratings (optional)
- Periodic Review
- Annual IFSP
- Referral for Special Education Evaluation

Reporting for On-going Child

- *Early On* Component
- *Early On Services* Component
- Part C Assessment (Child Outcomes Ratings) Component (If an Annual Rating is Completed)

Part C Childhood Outcomes (Part C Assessment component)

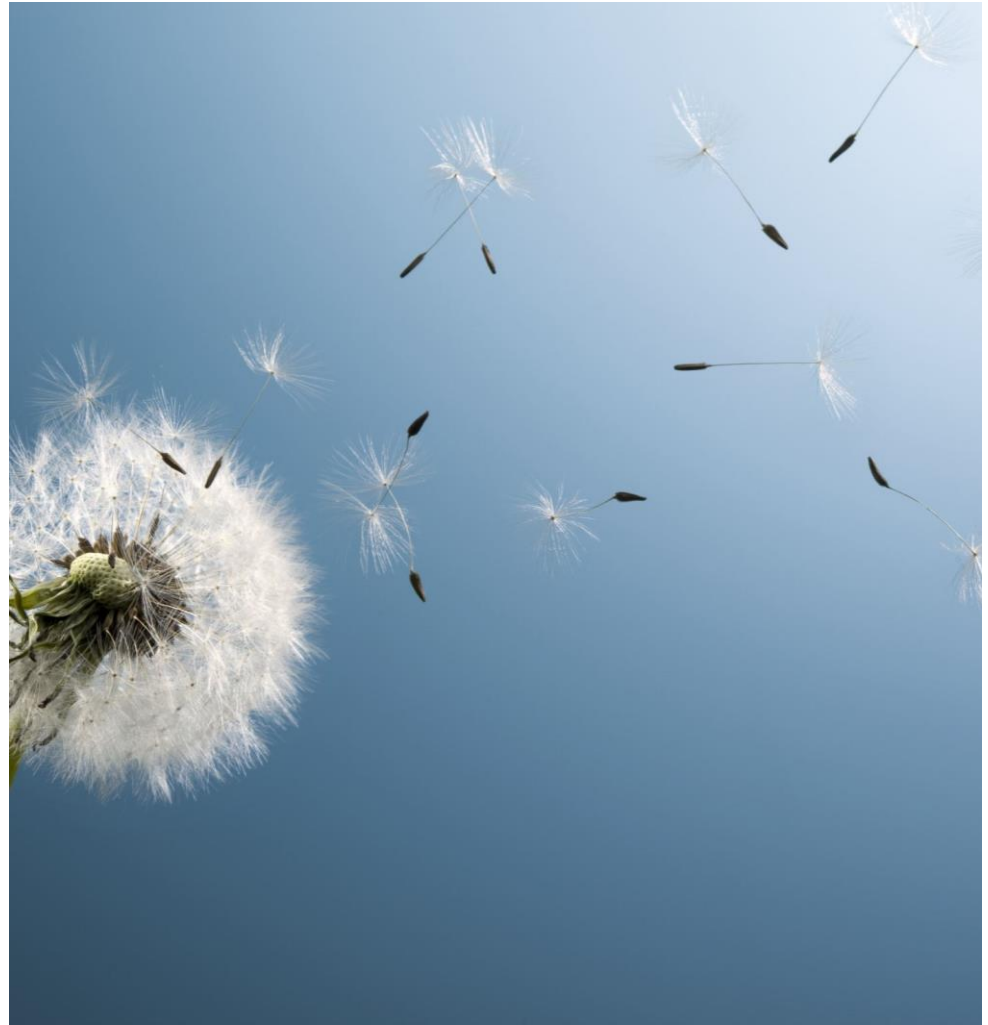
Reporting an On-going Child Eligible for Part C and MMSE

- Special Education Component (If Also Eligible and Receiving Special Education Services)

The screenshot displays a web-based form for reporting a child's special education status. The form is titled "Special Education" and has tabs for "Early On", "Initial IFSP", and "Part C Assessment". The "Early On" tab is active. The form contains the following fields and options:

- Primary Disability:** A dropdown menu with "11-Early Childhood Developmental Delay" selected.
- Secondary Disability:** A list of checkboxes for "22-Legally Blind" and "24-Deaf".
- Plan Date:** A date field with "02/27/2024" entered.
- Type of Plan:** A dropdown menu with "01-IFSP" selected.
- Additional Plan Date:** Two empty date fields.
- Support Services:** A list of checkboxes for "240-T.C. Hearing Impaired", "250-T.C. Visually Impaired", "261-T.C. Physical Impairment", "262-T.C. Other Health Impairment", and "280-Homebound/Hospitalized".
- Program Service Code:** A list of checkboxes for "192-Programs for Severe Language Impairment", "193-Programs for Autism Spectrum Disorder", "194-Elementary or Secondary-Level Resource Program", and "270-Early Childhood Special Education Services".
- Primary Educational Setting:** A dropdown menu with "31-Home" selected.
- Placed By Another Dist IEP:** A dropdown menu with "Select Yes/No" selected.
- Spec Ed Exit Reason:** A dropdown menu with "Please Select" selected.
- Spec Ed Exit Date:** An empty date field.
- Section 52 FTE:** A text field with "0.00" entered.
- Section 53 FTE:** A text field with "0.00" entered.

**Exiting
Early On
and
Transition to
Part B/619**



Process


- Everything We Talked About for an Active Child
- Child Outcomes Exit Ratings
- Transition Plan
- Transition Conference (If Child is Eligible for Part C and MMSE)
- Part C Exit Date Determined


Reporting MSDS Components


- *Early On* Component
 - Part C Exit Date and Reason
 - Part C Assessment (Rating) Component – Exit Rating
- *Early On* Services Component
- Special Education Component (If Also Eligible and Receiving Special Education Services)
 - Special Education Exit Date and Reason if not Continuing on an IEP
- Part B Referral Component (If Also Eligible and Receiving Special Education Services and Exiting at 27 Months or Older)
- District Exit Date and Status if Not Continuing in a Program/Service Reported in MSDS General Collection


Reporting in MSDS


School Demographics Personal Demographics Contacts Enrollment Membership Special Education
EarlyOn Part B Referral **Part C Assessment** EarlyOnServices





*AssessmentDate: 


*AssessmentType:  03-Exit


*Social Relationships:  6-Between somewhat and completely


New Social Relationships:  Yes

*Knowledge Skills:  5-Somewhat

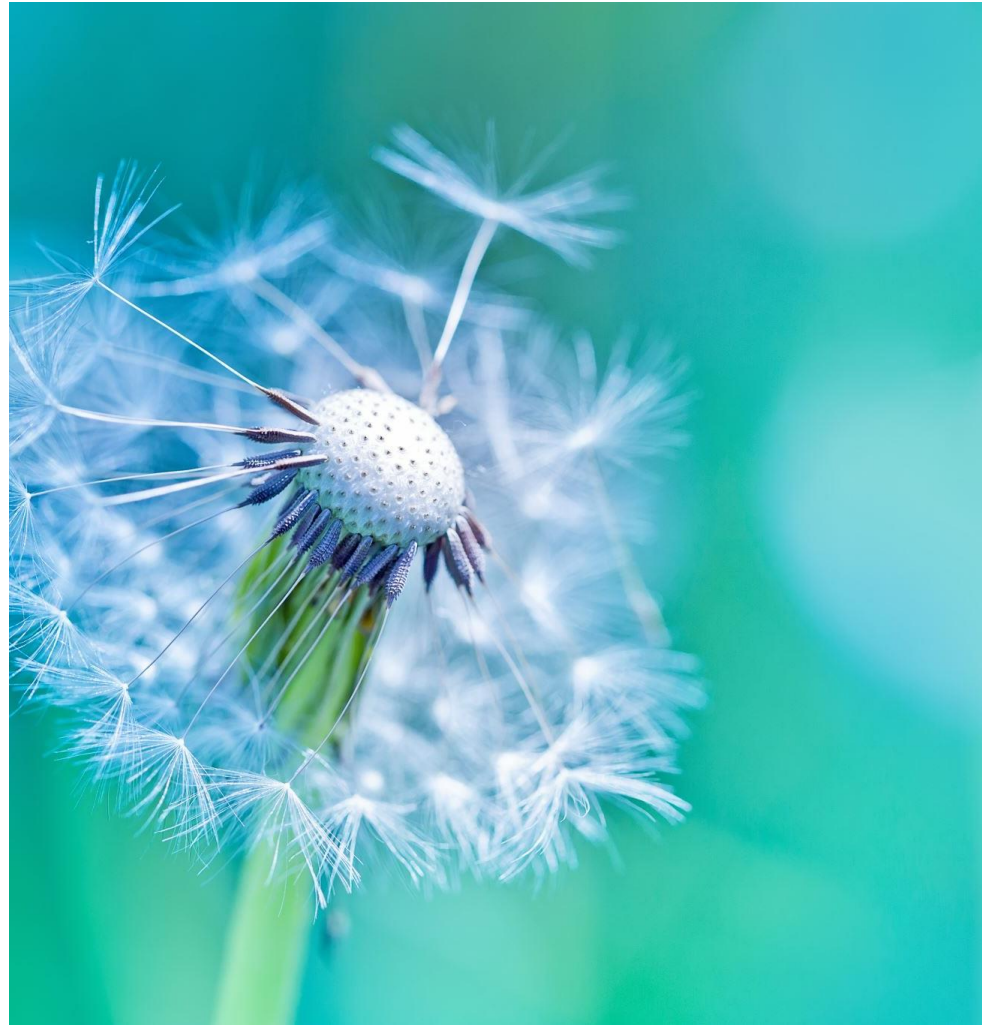
New Knowledge Skills:  Yes

*Actions:  7-Completely

New Actions:  Yes



Moving Within State



Processes

- Everything We Talked About for an Active Child
- Child Outcomes Exit Ratings
- Transition Plan (If Child is Over 27 Months Old)
- Transition Conference (If Child is Eligible for Part C and MMSE and Over 27 Months Old)
- Part C Exit Date Determined

Reporting a Child Who Has Moved

- *Early On* Component
- Part C Exit Date
- *Early On* Services Component
- Special Education Component (If Also Eligible and Receiving Special Education Services)
- Part C Assessment (Child Outcomes Ratings) Component

Data Validation



Reports from Local Student Information System

- Report of All Initial IFSPs Since Prior Count Date
 - Check for IFSP Timeliness
 - Check for Initiation of Services Timeliness
- Report of Children in Transition Window
 - Check for Transition Plans
 - Check for Transition Conferences (If MMSE)

Reports from MSDS

MSDS Reports

Once on the MSDS page scroll down to the Help and Training library.

Click MSDS Reports List

⊕ Manuals

⊗ Help and Training

- [31a Resources and Information](#)
- [EL Auto Exit FAQ](#)
- [English Learner Auto Exiting Webinar](#)
- [English Learner Exit Reporting Guidelines](#)
- [Helpful Hints for Early Middle College Reporting](#)
- [MSDS Best Practices Reporting Guide for Trouble](#)
- [MSDS District User Guide](#)
- [MSDS FAQs](#)
- [MSDS Report List](#)
- [Race and Ethnicity Reporting](#)

MSDS Reports List – Page 2

MSDS Reports

Page 2 is a list of

- Report title
- Description
- Any filters
- Fields included

Report Name	Report Description	Students Included	Recommendations/Suggested Users	Additional Information	Target Audience	Fields
Alpha List (Full Membership)	An alphabetical listing of students submitted in this election, grouped by building and grade.	All	Review this report to verify that the list of your General and Special Ed. students, including PTE, are correct. Compare the report against reports from your student information system.		District Users, Auditors	Student Name, Address, City, Postal Code, UIC, Student ID, Date of Birth, COE, Grade, Enrollment Data, LEA Number, Residency Code, Exit Status, Exit Date, Special Education Program Code, General Ed. PTE, Special Ed. PTE, Special Ed. SPTE, Total PTE
Alpha List (Full Membership) with PTE	An alphabetical listing of students submitted in this election, regardless of their PTE, grouped by building and grade. Includes addresses.	NO PTE	Mail ID Auditors require this report to be submitted to them.	The student count may not match the other MSDS Reports. This is because the report is not intended to be used as a headcount report.	District Users, Auditors	Student Name, Address, City, Postal Code, UIC, Student ID, Date of Birth, COE, Grade, Enrollment Data, LEA Number, Residency Code, Exit Status, Exit Date, Special Education Program Code, General Ed. PTE, Special Ed. PTE, Special Ed. SPTE, Total PTE
Alpha List for Download	An alphabetical listing of students submitted in this election, formatted for use in Excel or CSV formats. The report is initially sorted by building and student last name, but is capable of being sorted on any header. Includes addresses.	All	This report is intended to be downloaded as an Excel or CSV file. Selecting PDF will cause unexpected results. Once downloaded, you will have the ability to sort and filter on any field. This will answer questions such as "Which students have an PTE between 0.00 and 1.00?" and "How many PTEs do I have for each Resident/LEA code?"		District Users, Auditors	Student Name, Building Name, Address, City, Postal Code, UIC, Student ID, Date of Birth, COE, Grade, Enrollment Data, LEA Number, Residency Code, Exit Status, Exit Date, Special Education Program Code, General Ed. PTE, Special Ed. PTE, Special Ed. SPTE, Total PTE, Days Absent, Total Pupils-Nonstate, Suburban, Rural, Urban, Building/Room Otherwise Aband
Audit Status	This report is sorted by district code and displays a district's audited status. The Audit Status will display Unaudited (NOS) or Audited (ADS). The Narrative Status will display Open, Solved or Submitted.	NA	This report is mainly for CEP/PADE use, but can be run by the districts to determine whether or not a district has been audited.		State Administrators	District Number, District Name, Audit Status, Narrative Status
Current Student List	A listing of students for a specified school year. The report will display the current status, expected graduation year, district exit information (if applicable), enrollment building.	All	Review this report to verify that student current statuses are correct. The report will initially run in the current. Click the Report button at the bottom of the page to export to PDF or Excel.		District Users	UIC, Last Name, First Name, Cohort Status, Exit Year, Exit Code, Exit Date, Building, District Name & Number
District Status Report	Displays each district's current election status. The report will indicate if a district has certified, is in progress (waiting), or has not started the staging area).	NA	This report is mainly for CEP/PADE use, but could also be run by SDCs to determine status of their constituent districts.		State Administrators, Auditors	SD Name & Number, District Name, District Code, Certified Date, Status, Prior Collection Count, Submitted Count, Error Count, Unresolved Count, Certified Count, Date Updated, Counting Agency, Election Management/Chairperson, Election Service Provider
District Certification Download Status	Contains a list of districts that have downloaded or not downloaded the District Certification Student Status report cover sheet for a selected school year.	NA	This report is mainly for CEP/PADE use, but could also be run by SDCs to determine whether or not their constituent districts have downloaded the report.		State Administrators, Auditors	SD Name, District Name & Number, Download Date
District Certification Student Status	Report of students identified as Directly Certified. This report is refreshed bi-weekly in August/September and monthly thereafter.	All	This report can be downloaded and posted to district student information systems under food service systems. It is recommended that districts download the report after every refresh.		District Users	UIC, Eligible Category, Last Name, First Name, Middle Initial, Date of Birth, COE, Gender, Student Number, Exit Date, Eligible Date
Discipline and Consequence Summary	Count of students by incident type and disciplinary action type, including student-level detail.	All	Review this report to verify that all expulsions and suspensions for Special Ed students have been submitted.		District Users	Initial, Consequence, Incident Type, Action Total, Incident Total
District Special Education Report	This report is similar to the "Alpha" reports, but only includes students identified as Special Education. It shows the UIC, First & Last Name, Local Student ID, SP Code, Primary Disability code, Primary Program Code, Primary Ed. Setting, Placement Number, District, Sex, SP PTE, Spec. Ed. PTE and PTE. The report includes an initial SPF minimum. The report is refreshed bi-weekly.	Continuing	Review this report to verify that your list of Special Ed. students is correct.	Only students that are active special education participants as of the countdate will be included in this report. Therefore if a student's status changes or after	District Users	UIC, First Name, Last Name, Student ID, Birthdate, Plan Code, Plan Date, Day 1 Year, Type of Plan, Primary District, Primary Program Code, Primary Ed. Setting, Placement Other District, Section 504 PTE, Section 504 PTE, & PTE SP

Early On Student Roster Report

Certified Data

Collection: Spring 2019 General Collection 2018-2019

Submitting Entity: ██████████

Description: Alphabetical listing of students reported with the Early On component.

Last Name	First Name	UIC	DOB	Local Student ID	Ethnicity	IFSP Date	Service Codes	Primary Service Setting	Timely Start of Service	Is Initial IFSP	Part C Exit Date	Part C Exit Reason	Transition IFSP	Transition Conference	
██████████	██████████	██████████	██████████	██████████	██████████	01/17/2019	818, 813	31	4	No					
						08/21/2018	818, 802	31	4	No	11/29/2018	37			
						11/02/2018	818, 807	31	4	No					
						09/11/2018	818, 808	31	4	No					
						12/18/2018	818, 814	31	4	No				01	
						09/18/2018	807, 818	31	4	No					
						11/28/2018	818, 812	31	4	No					
						12/27/2018	814, 818	31	1	Yes				01	
						01/15/2019	818, 814	31	1	Yes				01	
						12/05/2018	818, 808	31	1	Yes					
						02/08/2019	818, 812	31	4	Yes					
						10/29/2018	814, 818	31	4	No					
						08/28/2018	813, 818	31	1	No					
						09/21/2018	818, 802	31	4	No					
						06/05/2018	818, 814	31	4	No	11/12/2018	30	01	13	
						10/24/2018	818, 813, 814	31	4	No	12/07/2018	30	01	01	
						12/05/2018	818, 808	31	4	No					

Initial IFSP Report

Certified Data

Collection: Spring 2019 General Collection 2018-2019

Submitting Entity: ██████████

Description: Summary and student-level information about students reported with the Initial IFSP Component.

Summary Information

Building	Special Ed Students	Early On Students	Students with Initial IFSP	Percentage of Initial IFSP to Special Ed Students	Percentage of Initial IFSP to Early On Students	Number of Late Initial IFSPs	Number of On Time IFSPs
H██████████)	95	1	0	0%	0%	0	0
██████████t)	51	452	169	331.37%	37.39%	0	155
Totals	146	453	169	115.75%	37.31%	0	155

Certified Data

Collection: Spring 2019 General Collection 2018-2019

Submitting Entity: ██████████

Description: Summary and student-level information about students reported with the Initial IFSP Component.

Student Details

Building	UIC	Local Student ID	Last Name	First Name	DOB	Referral Date	Referral Agency	Timeliness	Result
██████████	██████████	██████████	██████████	██████████	██████████	12/19/2018	Education	01	03
██████████	██████████	██████████	██████████	██████████	██████████	12/06/2018	Family member/Parent	01	03
██████████	██████████	██████████	██████████	██████████	██████████	10/23/2018	Physician	01	03
██████████	██████████	██████████	██████████	██████████	██████████	12/27/2018	Education	01	03
██████████	██████████	██████████	██████████	██████████	██████████	10/08/2018	Family member/Parent	01	03

Early On Assessment Report



Certified Data

Collection: Spring 2019 General Collection 2018-2019

Submitting Entity: [REDACTED]

Description: Alphabetical listing of Early On students with assessment data, as reported in the Part C Assessment Component.

School / Facility	UIC	Local Student ID	Last Name	First Name	Date of Birth	Ethnicity	Assessment Date	Type of Assessment	Assessment Tool	Parent Input	Parent Input Date	Social Relationships	New Social Relationships	Knowledge Skills	New Knowledge Skills	Actions	New Actions
[REDACTED]	[REDACTED]	[REDACTED]	[REDACTED]	[REDACTED]	[REDACTED]	[REDACTED]	09/08/2016	Entrance	H	C	09/08/2016	2		1		1	
[REDACTED]	[REDACTED]	[REDACTED]	[REDACTED]	[REDACTED]	[REDACTED]	[REDACTED]	12/18/2018	Exit	F	C	12/18/2018	1	Yes	1	Yes	1	Yes

Data Quality (DQ) Checks by CEPI

Subject: CEPI Data Quality Concern: Spring 2024 MSDS General Mid-Collection*

Entity: YOUR ISD (00000)

Data Quality Snapshot:

March 7, 2024, at approximately 6 a.m.

Data submitted after this date and time are not reflected in the report below.

Purpose: CEPI analysts have discovered anomalies in your Spring 2024 MSDS General Collection. Inaccurate data may adversely affect state and federal reporting, as well as reports available to the public, students, parents and policymakers. Inaccurate data may result in your entity being identified as non-compliance and could result in funding penalties.

Action: Please review the following issue(s) and check your submission for the concerns listed. Any changes to your current collection must be completed by March 20, 2024, at 11:59 p.m.

- **If your data are correct, no action is necessary.**
- **If your data are incorrect, please make changes within the application.**

- DQMS1019 IFSP Dates Over One Year Old
- DQMS1096 Initial IEP: Count of Zero Reported
- DQMS1502 Entry Rating Missing
- DQMS1505 Exit Rating Missing

Users Contacted: Local Super Users, Quality Reviewers, Certifiers, Uploaders
Your MSDS users are listed at the end of this email.

Questions: Contact CEPI customer support (cepi@michigan.gov) by replying to this email or calling 517-335-0505 x3.

Thank you,
[CEPI](http://cepi.org)

Data Quality Details:

DQMS1019: IFSP Dates Over One Year Old

PROBLEM: The UICs listed below are for children reported with IFSP Dates at least one year old as of the current general collection Count Day. This report only includes children reported as continuing (District Exit Status "19").

IMPACT: These data are used in state and federal reporting. Reporting inaccurate data could result in negative compliance findings.

RESOLUTION: Please run the Early On Student Roster report in MSDS and confirm that the IFSP dates are correct. After review, please follow one of the action items at the beginning of this email.

UIC	Current IFSP Date
046	5 -- 01/23/2023
36	7 -- 02/03/2023
79	7 -- 01/27/2023
94	7 -- 02/08/2023

DQMS1096: Initial IEP: Count of Zero Reported

PROBLEM: Your district did not report any students with the Initial IEP Component in the current General Collection.

IMPACT: An Initial IEP is completed when a student who is not currently receiving special education programs and/or services is evaluated to determine special education eligibility. The annual or review of a current existing IEP is not to be reported as an Initial IEP. The Michigan Department of Education (MDE) and the United States Department of Education use these data to determine compliance with the IDEA requirements. Additionally, this subgroup of data is used in a majority of reports in MI School Data.

RESOLUTION: Please run the staging or certified District Special Education Report in the MSDS and verify that none of these students completed an initial IEP. After review, please follow one of the action items at the beginning of this email.

DQMS1502: Entry Rating Missing

PROBLEM: The UICs listed below are for children reported with the Initial IFSP Component who have a referral date 90 days or more before the current general collection Count Day, and no Part C Early Childhood Outcomes data have been reported.

IMPACT: These data are used in state and federal reporting. Reporting inaccurate data could result in compliance findings.

RESOLUTION: A Part C entry rating should be completed within 90 days of an Early On referral. Please check your local records and the Early On Assessment Roster. If the Part C Early Childhood Outcomes Rating was completed, please report these data. After review, please follow one of the action items at the beginning of this email.

UIC	Referral Date
021	14 -- 08/05/2023
389	16 -- 10/26/2023
430	78 -- 11/05/2023
851	35 -- 10/17/2023
930	38 -- 09/29/2023
944	39 -- 10/04/2023

DQMS1505: Exit Rating Missing

PROBLEM: The UICs listed below are for children exiting Part C who have been in the program at least 6 months and no Part C exit rating data are reported.

IMPACT: These data are used in state and federal reporting. Reporting inaccurate data could result in compliance findings.

RESOLUTION: Please verify whether these children actually exited Part C, and if so, whether a Part C Exit Rating was completed, and review the Early On Student Roster. After review, please follow one of the action items at the beginning of this email.

UIC	Part C Exit Date
01	922 -- 10/23/2023
0	819 -- 12/19/2023
2	616 -- 02/05/2024
6	663 -- 01/07/2024

Targeted E-mails from IDEA Part C Data Manager

- Purpose:
 - Identifying Data Which May Need Updating for Accuracy or Completeness
- After each MSDS General Collection
- Compliance Indicator Data
- Reported Active in Prior Collection & Not Reported in Current Collection
- Eligibility Under MARSE Without Special Education Component Or Reverse

Questions



MiLEAP Contact Information

Janet Timbs

Birth to Five Early Childhood Special Education Manager

MiLEAP

Email: timbsj@michigan.gov

Colleen O'Connor

Early On Consultant and IDEA Part C Data Manager

MiLEAP

Email: occonnorc1@michigan.gov

MiLEAP-Birth-5@michigan.gov

CEPI & MDE Contact Information

Anne Hansknecht

Senior Data Collection Analyst

Department of Technology, Management, and Budget

Center for Educational Performance and Information

Email: hansknechta@michigan.gov

CEPI customer support email: cepi@michigan.gov

Ann Walton

Contractor

Michigan Department of Education

Email: waltona6@michigan.gov